

BLACKBOX 610R

ELECTRONICS SET-UP SHEET

2S LiPo	
On resistance (Ω)	0.00043
Continuous current (A)	160
Dimensions (mm)	38.5 x 36.9 x 19.5
Weight w/o wires & fan (g)	45
Motor limit	4.5T
BEC	6.0 - 7.4V / 5A
Fan	Optional

DRIVER: Brady Carrico EVENT: JConcepts INS TRACK: RC One DATE: May 2026

VEHICLE: B84 CONDITIONS: Medium Grip Beachline Carpet BATTERY: Reedy StockStar 5800 160c TEMP: _____

ESC INFO

FIRMWARE: 11858509

CAPACITOR TYPE: Kit

FAN: NA

WIRE SIZE: 12 AWG

BRAKE

1A DRAG BRAKE: 2%

1B BRAKE STRGTH: 90%

1C INIT BRAKE: Drag

1D BRAKE FREQ: 3 Khz

1E BRAKE PUNCH: 8

1F BRAKE MODE: Traditional

THROTTLE

3A PUNCH CTRL: 30

3B INIT THROTTLE: 5%

3C DRIVE FREQ: 6 Khz

3D DEADBAND: 6%

3E CURRENT LIMIT: 100%

MOTOR POWER

EXPERT

4A BT SOFT PWIR: _____

4B BT SOFT RNG: _____

4C COAST VALUE: _____

4D BOOST TIMING: _____

4E BOOST TIM ACT: _____

4F BOOST ST RPM: _____

4G BOOST END RPM: _____

4H TURBO TIMING: _____

4J TURBO DELAY: _____

4K SLEW RATE: _____

4L RELEASE RATE: _____

STANDARD

5A TIMING LEVEL: 0

RADIO SETTINGS

THROTTLE EPA: 100

BRAKE EPA: 100

THROTTLE EXPO: 0

MISC CONTROL

6A RUN MODE: F/B F/R

6B REVERSE PWR: 25% 50% 75% 100%

6C BATT CUTOFF: NONE 3.2V/CELL 3.4V/CELL

6D ESC TEMP CUT: OFF 221F/105C 257F/125C

6E MOT ROTATION: NORMAL REVERSE

6F BEC VOLTAGE: 6.0V

MOTOR SETTINGS

MOTOR: _____

WIND: 13.5T

TIMING: _____

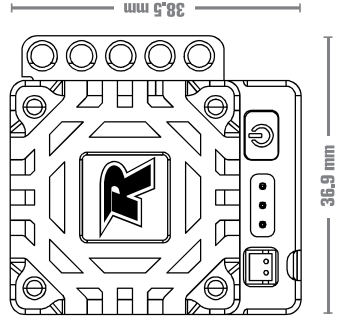
ROTOR: _____

FDR/ROLLOUT: 30/72

MISCELLANEOUS

SERVO: Reedy 2007HD

CHARGER: _____



NOTES:

- Sanwa M17
- 100% Dual Rate
- 10 Steering Speed
- 0% Steering Expo
- 7S Steering Feeling
- 100% Throttle
- 100% Brake
- +0 Throttle Speed
- 0% Throttle Expo
- 7S Throttle Feeling



@ReedyPower
 @ReedyPower
 @ReedyPower



www.ReedyPower.com